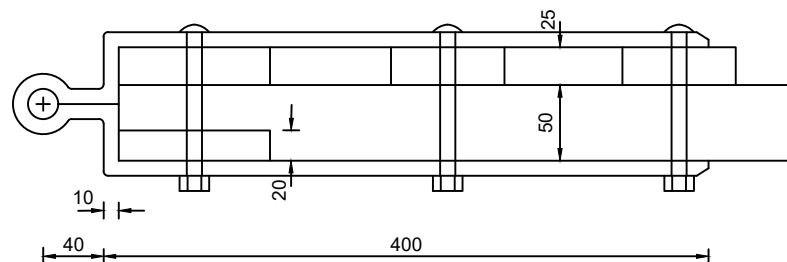
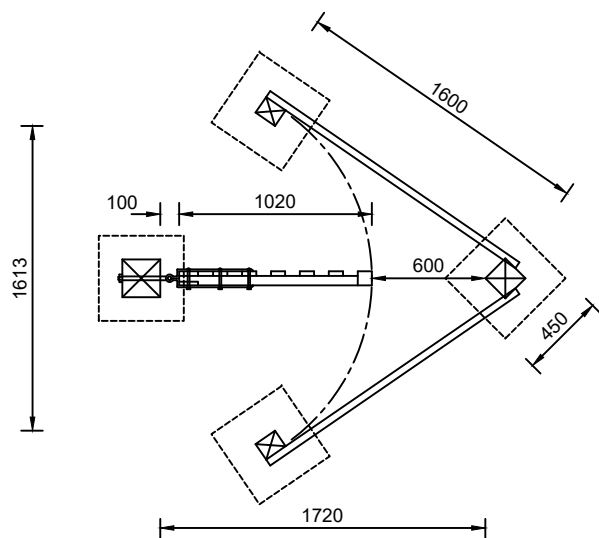


Detail of joint between top and bottom rails and hanging stile



NOTES:

1. All dimensions are in millimetres unless otherwise stated.
2. Gates shall comply with the appropriate Clauses in the 300 Series, and further requirements in Appendix 1/15 or 3/1 and the appropriate Clauses in BS 5709.
3. Gate itself shall be timber wicket gate Type 2 (Drg No. **SD/300/28**)
4. All nails shall be galvanised.
5. All tenons shall be pegged with 13 dia oak dowels.



DESCRIPTION OF TIMBER MATERIALS	SIZE
Wing Posts	125 x 100 x 2100 long
Apex Posts	150 x 150 x 2100 long
Fence rails cut to length and housed in the apex post	87 x 38 x 1600 long

©Crown copyright 2015. All rights reserved. Use of this image is limited to viewing on-line and printing one copy. Leicestershire County Council. 100019271.



ENVIRONMENT AND
TRANSPORT DEPARTMENT

TITLE:

FENCING

TIMBER KISSING GATE

DRAWING NUMBER

SD/300/34

DATE

APRIL 2024

AUTOCAD REF

K:\GENERAL\ID9997\STDORG\STD DRGS 2015

SCALE

NOT TO SCALE

Rev

Date

Supersedes Dwg. SD/3/34 - September 2002

Notes on Revision