

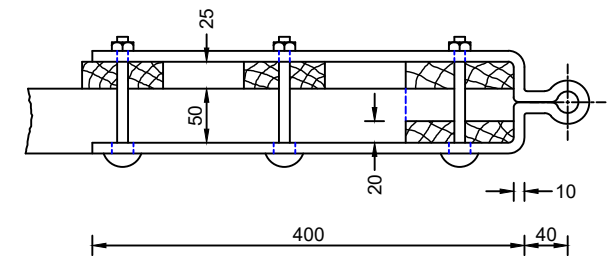
TIMBER WICKET GATE - TYPE 1

DESCRIPTION OF TIMBER MATERIAL	SIZE
Hanging Post	200 x 200 x 2100 long
Shutting Post	175 x 175 2100 long
Hanging Stile	100 x 75
Shutting Stile	75 x 75
Top Rail	100 x 75 tapering to 75 x 75
All Other Rails	75 x 25
Braces, housed in top rail	75 x 25

TIMBER WICKET GATE - TYPE 2

DESCRIPTION OF TIMBER MATERIAL	SIZE
Hanging Post	200 x 200 x 2100 long
Shutting Post	175 x 175 x 2100 long
Hanging Stile	100 x 75
Shutting Stile	75 x 75
Top Rail	100 x 50
All Other Rails	75 x 50
Braces, housed in top rail	75 x 25
Pales with pointed tops secured to each rail and the braces by two galvanised 63 x 10 s.w.g. nails dovetail driven	75 x 25 x 1220 long

Detail of Joint between Top and Bottom Rails and Hanging Stile



NOTES:

1. For Notes see Drg No **SD/300/25**

©Crown copyright 2015. All rights reserved. Use of this image is limited to viewing on-line and printing one copy. Leicestershire County Council. 100019271.



ENVIRONMENT AND TRANSPORT DEPARTMENT

TITLE:

FENCING

TIMBER WICKET GATES - TYPES 1 AND 2

DRAWING NUMBER	DATE
SD/300/28	APRIL 2024
AUTOCAD REF	SCALE
K:\GENERAL\ID9997\STDDRG\STD DRGS 2015	NOT TO SCALE

0	01.04.2024	Supersedes Dwg. SD/3/28 - September 2002
Rev	Date	Notes on Revision